

W  
E'  
R  
E  
  
R  
E  
A  
D  
Y



**3 day kits for service  
animals/pets to shelter in  
place or evacuate**  
(combine with To Go Kit)



## Collaborative Partners

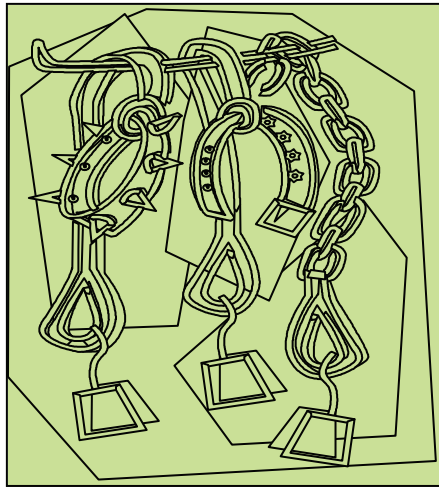
ND State Council on Developmental Disabilities

ND Protection and Advocacy Project

ND Center for Persons with Disabilities.

Contact Neil Scharpe at  
1-800-233-1737 or [neil.scharpe@minotstateu.edu](mailto:neil.scharpe@minotstateu.edu)  
for more information on disaster planning.

W  
E'  
R  
E  
  
R  
E  
A  
D  
Y



## Extra collars and leashes

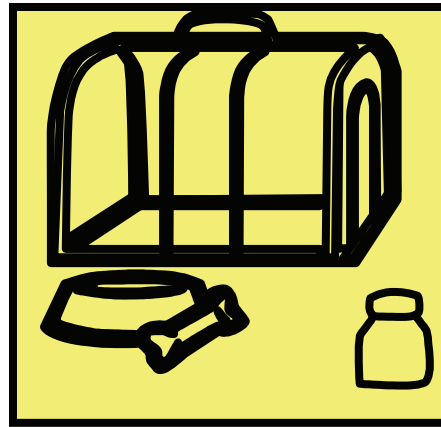
W  
E'  
R  
E  
  
R  
E  
A  
D  
Y



3 day supply of food



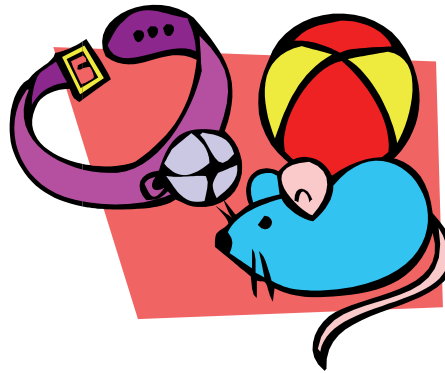
W  
E'  
R  
E  
  
R  
E  
A  
D  
Y



Pet crates, litter boxes, and  
other daily needs



W  
E'  
R  
E  
  
R  
E  
A  
D  
Y



Pet toys and other items  
your pet will need in 3 days



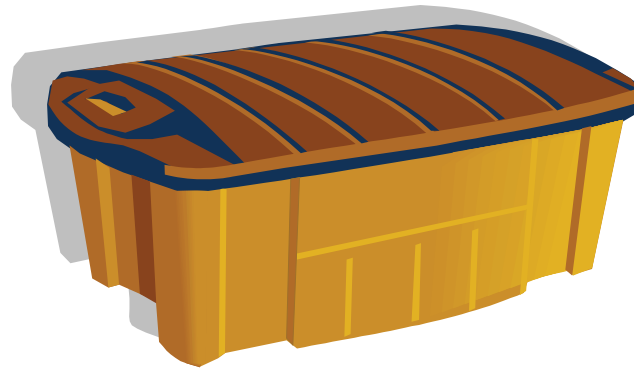
W  
E'  
R  
E  
  
R  
E  
A  
D  
Y



## Large pet first aid kit



W  
E'  
R  
E  
  
R  
E  
A  
D  
Y



Larger container for pet  
supplies for 3 days

